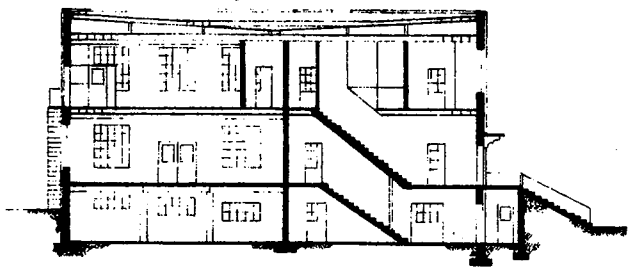
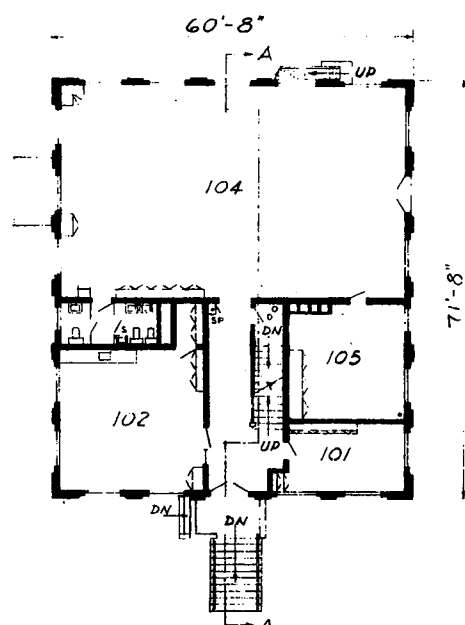


SECOND FLOOR PLAN

- 201, 205 SEWING
- 202 OFFICE
- 203 SEWING
- 204 WOMEN'S CRAFTS



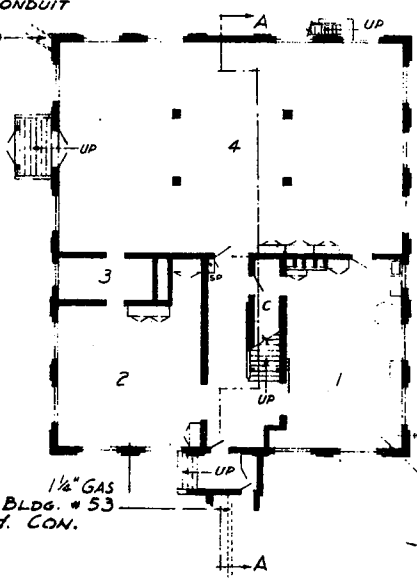
SECTION A-A



FIRST FLOOR PLAN

- 101 CRAFTS
- 102 HOME EC. & CRAFTS
- 104 MEN'S CRAFTS
- 105 SUPPLY

CON. SERVICE CONDUIT  
TO BLDG. # 58  
SIZE 18"Wx12"D



BASEMENT PLAN

- SERVICE TUNNEL TO BLDG. # 53
- SIZE 4'-0"Wx6'-0"H. CON.
- 2" LP STRAM
- 1 1/2" RETURN
- 1" COMPRESSED AIR
- 1" H.W.
- 1" C.W.
- 2 300,000 CM 110 V AC
- 1 1/2" CON. P-#4
- 110 V AC

- 1 DYE ROOM
- 2,3 UN-USED
- 4 RECREATION

	FIELD, CPAECH, BELL & BLINE ARCHITECTS	REVISIONS AUG, 1969	
MICHIGAN DEPARTMENT OF ADMINISTRATION BUILDING DIVISION ADRIAN N. LANGIUS DIRECTOR	<p>SCALE OF FEET</p>	SURVEYED JULY, 1953 PAUL A. HAZELTON REGISTERED ARCHITECT	TRAVERSE CITY STATE HOSPITAL TRAVERSE CITY OCCUPATIONAL THERAPY BUILDING # 61