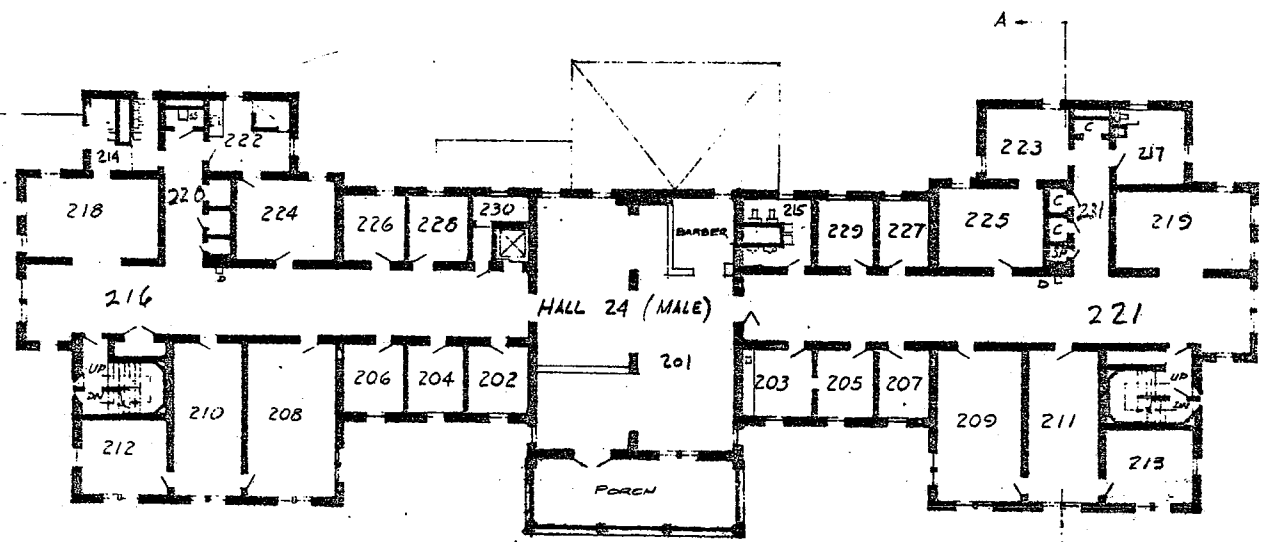


SECTION A-A



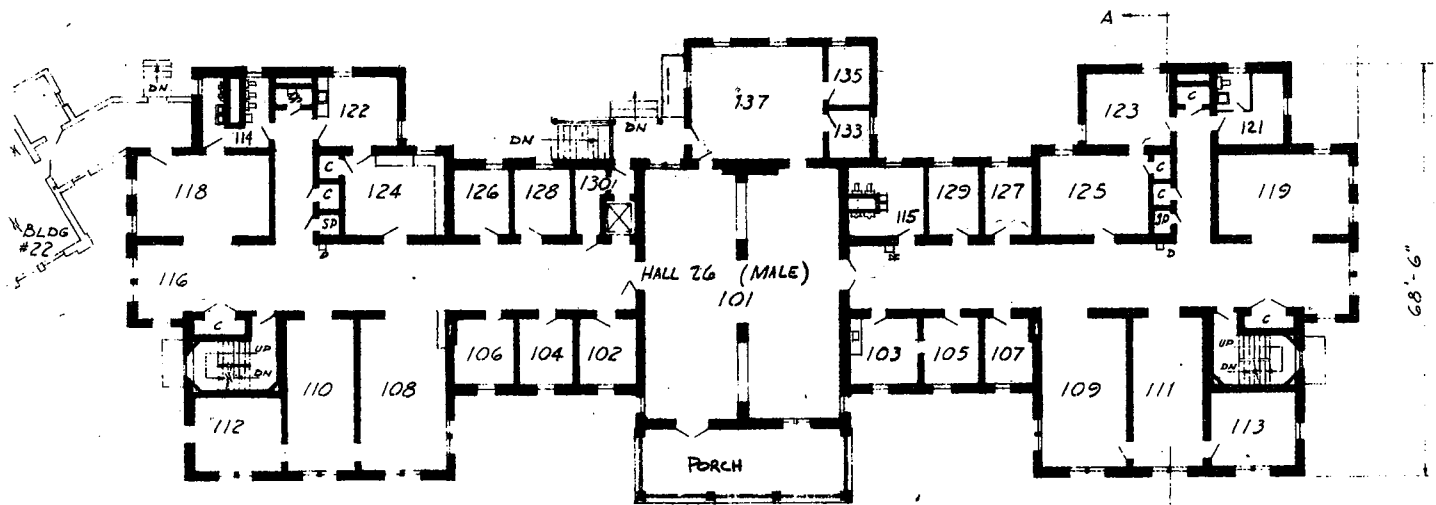
SECOND FLOOR PLAN

- 208, 211, 208-212, 218, 225 DORMITORY
- 202, 206, 213, 226-229 BED ROOM
- 207 VISITOR
- 203 ATTENDANT'S OFFICE
- 224 CLOTHES
- 201 DRY ROOM
- 204 LINEN
- 230 LAUNDRY CHUTE
- 219 RECREATION
- 223 CONFERENCE
- 222 BATH
- 214, 215 TOILET
- 217 ATTENDANT'S LOCKERS
- 205 EXAMINATION

FIELD: G. PAHECK  
 BELL & PLINE  
 ARCHITECTS

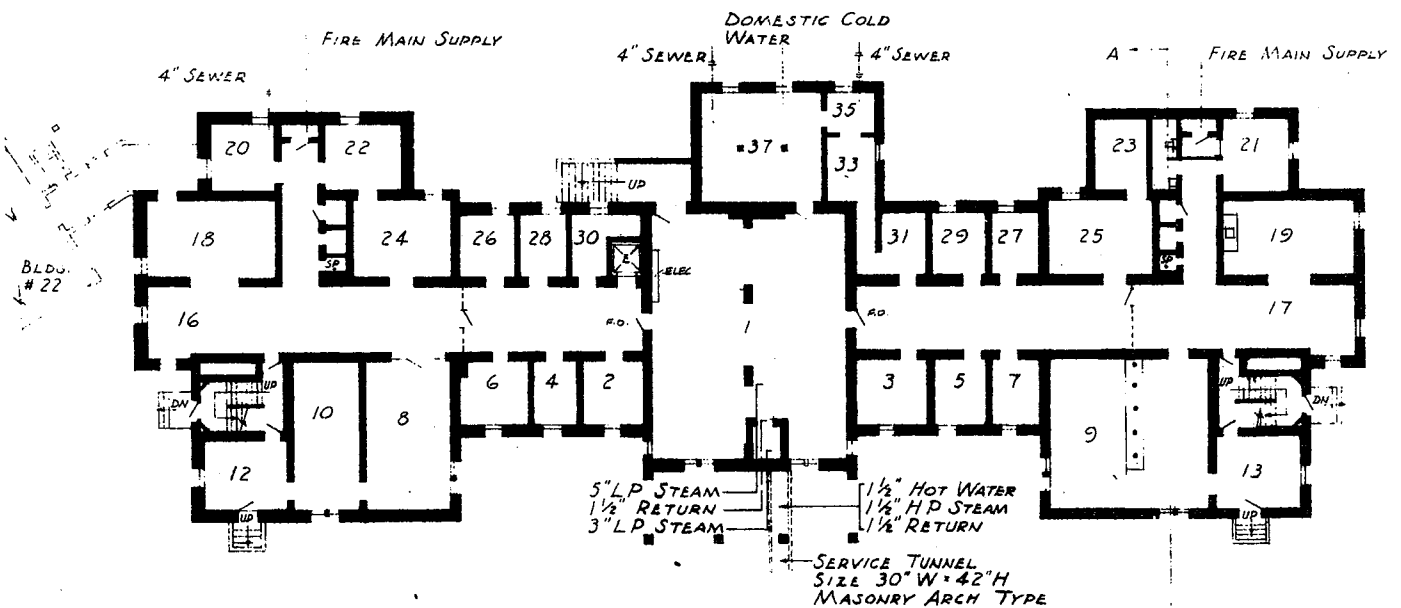
REVISIONS  
 AUG, 1969

204'-4"



FIRST FLOOR PLAN

- 105 PROFESSIONAL OFFICE
- 109, 108-112, 117, 111 125, 137 DORMITORY
- 107 EXAMINATION
- 113 CONFERENCE
- 103 ATTENDANT'S OFFICE
- 102, 104, 106, 123, 124-129 BED ROOM
- 124, 133, 135 CLOTHES
- 122 SHOWER
- 130 LINEN
- 101, 116, 118 DAY ROOMS
- 114, 115 TOILET
- 121 ATTENDANT'S LOCKERS



BASEMENT PLAN

- 1, 3, 5, 7, 8, 10, 12 UN-USED
- 2, 4, 6, 26, 28, CIVIL DEFENSE STORAGE
- 20, 27, 29, 31, 33, 29, 16, 18, 20, 27, 31, 33 UNASSIGNED
- 22, 24 CRAFTS
- 95, 97 BUILDING MATERIAL STORAGE
- 9, 11, 13 LOUNGE
- 23, 25 STORAGE
- 30, 21 MECHANICAL ROOM
- 19 BARBER

FIELD-GRAEBER  
BELL & BLINE  
ARCHITECTS

PREVISIONS  
AUG, 1969

SURVEYED JULY, 1953  
PAUL A. HAZELTON

TRAVERSE CITY STATE HOSPITAL  
TRAVERSE CITY

MICHIGAN DEPARTMENT OF ADMINISTRATION  
BUILDING DIVISION

