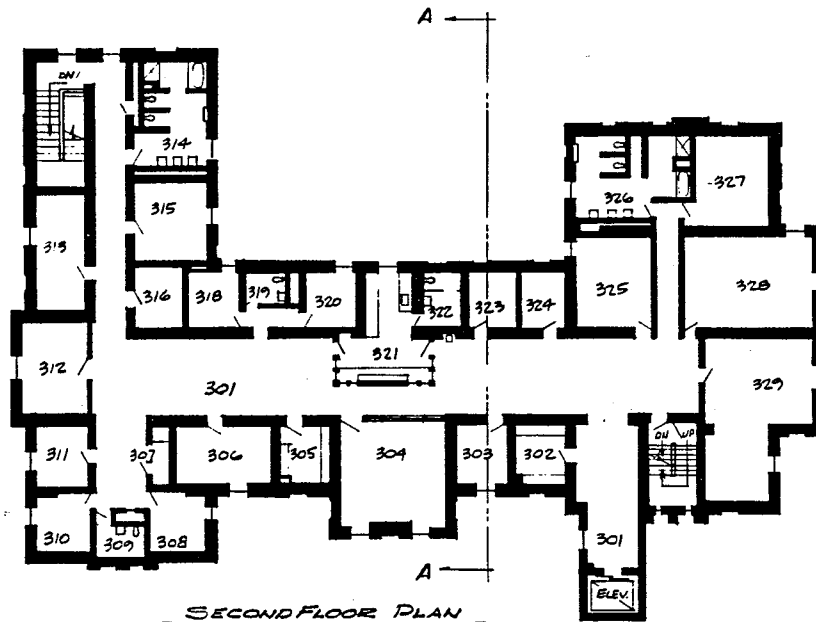
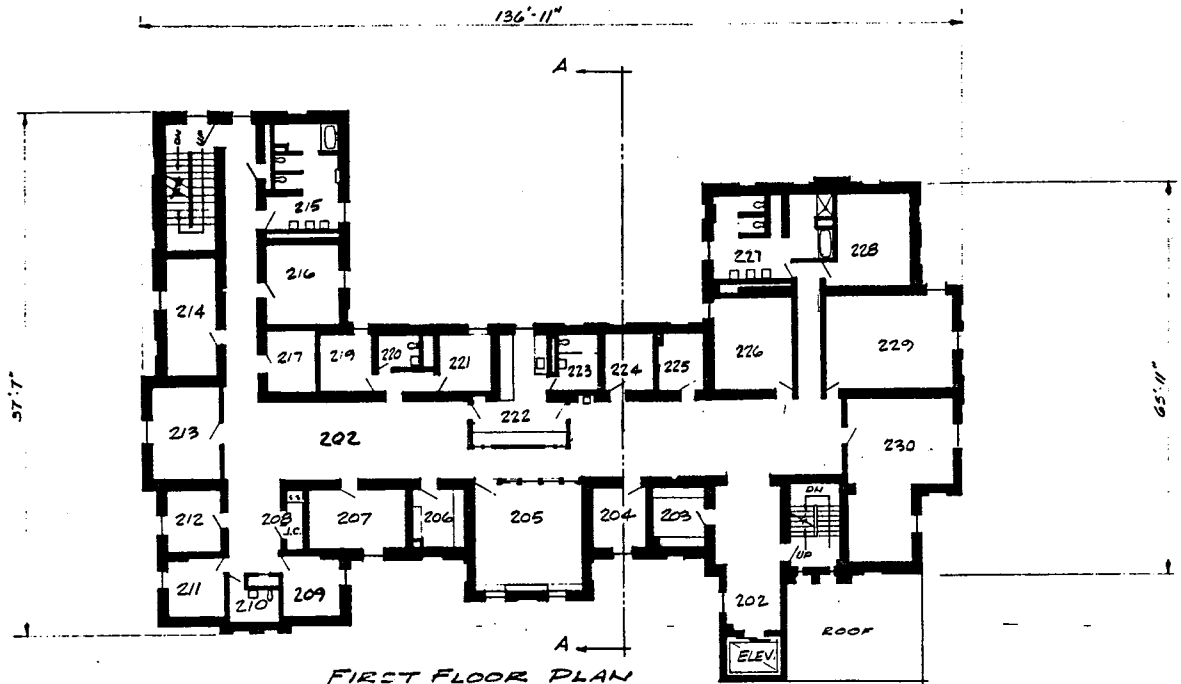


SECTION A-A



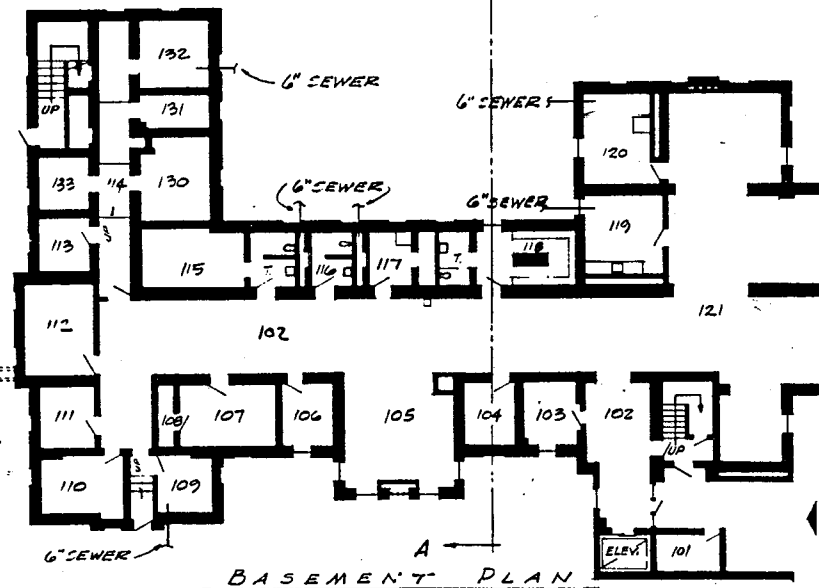
SECOND FLOOR PLAN

- | | |
|---------------------------------|----------------------------|
| 305 CLOTHING STORAGE | 323 CLEAN LINEN |
| 301 CORRIDOR | 321 NURSE'S STATION |
| 329 THREE BED ROOM | 318, 320 SECLUSION |
| 328 FOUR BED ROOM | 308, 310, 311 ONE BED ROOM |
| 316, 327 STORAGE | 307 JANITORS CLOSET |
| 309, 314, 319, 322, 326 TOILET | 304 QUIET ACTIVITIES |
| 306, 312, 313, 315, 325 TWO BED | 303 VISIT |
| 324 SOILED LINEN | 302 COATS |



FIRST FLOOR PLAN

- | | |
|--------------------------------|----------------------|
| 206 CLOTHING STORAGE | 224 CLEAN LINEN |
| 202 CORRIDOR | 222 NURSE'S STATION |
| 230 2-BED | 219, 221 SECLUSION |
| 229 4-BED | 209, 211, 212 1-BED |
| 210, 215, 220, 223, 227 TOILET | 208 JANITORS CLOSET |
| 207, 213, 214, 216, 226 2-BED | 205 QUIET ACTIVITIES |
| 225 COILED LINEN | 204 VISIT |
| | 203 COATS |



BASEMENT PLAN

- | | |
|----------------------------|-------------------------|
| 101 ELEVATOR EQUIPMENT | 115 MENS' LOCKERS |
| 130, 131, 132, 133 STORAGE | 106, 108, 111, STORAGE |
| 114, 102 CORRIDOR | 113 MECH. EQUIPMENT |
| 121 NOISY ACTIVITY ROOM | 112 EQUIPMENT ROOM |
| 120 LAUNDRY | 107 CONFERENCE |
| 119 KITCHENETTE | 105 QUIET ACTIVITY ROOM |
| 118 WOMEN'S LOCKERS | 104 CLEAN LINEN |
| 117 JANITORS CLOSET | 103 SOILED LINEN |
| | 116 TOILET |