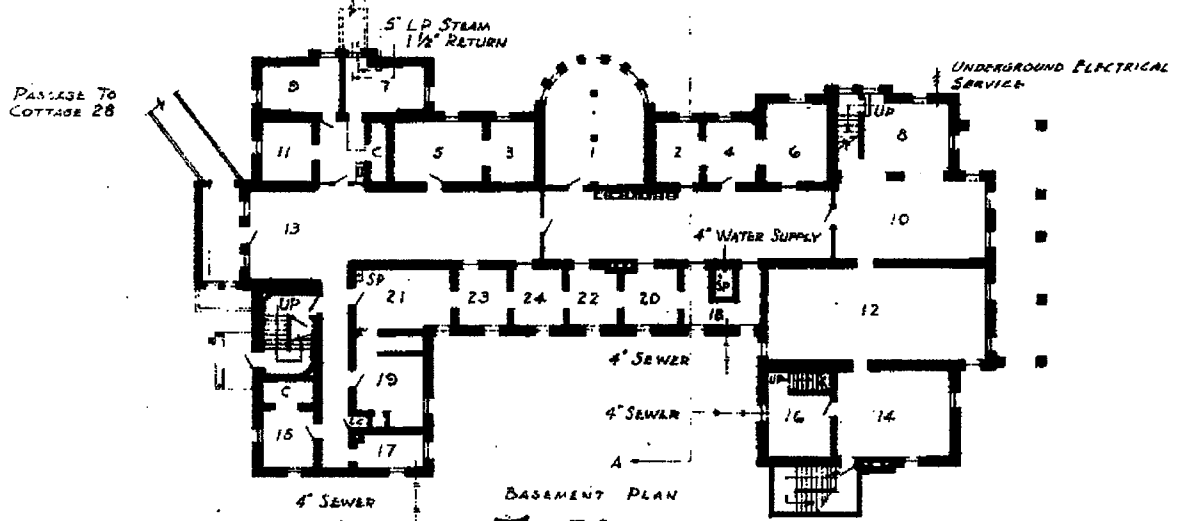


FIRST FLOOR PLAN

- 113 CORRIDOR
- 101, 108, 110 DAY ROOMS
- 102, 107, 111 BED ROOMS
- 109, 121, 122 BED ROOMS
- 112, 114, 116 DORMITORY
- 109, 117 CLOTHES ROOMS
- 115 SHOWER
- 118 ATTENDANT'S OFFICE
- 123 TOILET
- 125 WASH ROOM
- 124 ATT'D. TOILET
- 127 LINEN
- 120 EXAMINATION

SERVICE TUNNEL  
 SIZE 4' W x 4' H  
 MANGROVE ARCH  
 1 1/2" HP STEAM  
 1 1/2" RETURN  
 2 1/2" LP STEAM  
 1 1/2" COLD WATER  
 1 1/2" HOT WATER  
 1/2" C.P. ALARM



BASEMENT PLAN

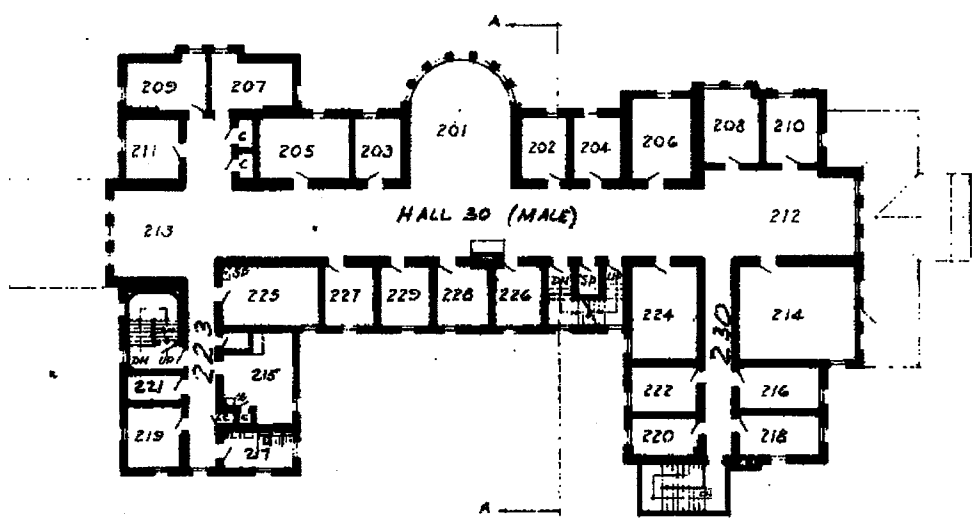
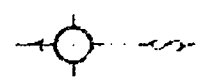
- 70 32**
- 8, 10, 12, 14 BARBER SHOP
  - 2, 4, 6 DAY ROOMS
  - 13, 18, 20-24 STORAGE
  - 3, 5, 17, 19 WORK CLOTHES
  - 7, 9, 11 TOOLS
  - 16 REPAIR SHOP
  - 16 VACANT

	FIELD-GANNECH-BELL & PLINE ARCHITECTS	FENIGSON AUG 1969	
MICHIGAN DEPARTMENT OF ADMINISTRATION BUILDING DIVISION ADRIAN N. LANGRISH DIRECTOR	0 5 10 20 30 SCALE OF FEET	SURVEYED JULY 1933 PAUL A. HAZARDON REGISTERED ARCHITECT	TRAVERSE CITY STATE HOSPITAL TRAVERSE CITY COTTAGE-MALE BUILDING # 30



CENTER RIDGE  
 18'-0"  
 ATTIC FLOOR  
 12'-9"  
 2ND. FLOOR  
 13'-0"  
 1ST FLOOR  
 10'-10"  
 BASEMENT

SECTION A-A



SECOND FLOOR PLAN

- 212, 213 CORRIDOR
- 201 DAY ROOM
- 202-211, 216, 218-220 BED ROOMS
- 222, 225-229 DORMITORY
- 214, 224 CUSTODIAL
- 215 TOILET
- 217 TOILET
- 221 LINEN

MICHIGAN DEPARTMENT OF ADMINISTRATION BUILDING DIVISION ADRIAN N. LANGIUS DIRECTOR	FIELD-CRAHECH BELL & PLINE ARCHITECTS SCALE OF FEET	REVISIONS AUG. 1969 SURVEYED JULY 1963 PAUL A. HAZELTON REGISTERED ARCHITECT	TRAVERSE CITY STATE HOSPITAL TRAVERSE CITY COTTAGE - MALE BUILDING #30
------------------------------------------------------------------------------------------	--------------------------------------------------------------	------------------------------------------------------------------------------------------	------------------------------------------------------------------------------